

6188 Bodega Ave  
Petaluma, CA 94952

COUNTY ASSESSOR'S PARCEL MAP

TAX RATE AREA 168-001

22-08

NOTE: THIS MAP WAS PREPARED FOR ASSESSMENT PURPOSES ONLY. NO LIABILITY IS ASSUMED FOR THE ACCURACY OF THE DATA DELINEATED HEREON.

Assessor's Map B122 R108  
Sonoma County, Calif.

E DENMAN  
ESTATE  
RANCH

PURVINE ROAD  
JUL 17 2001

REVISED:  
5-18-28-B-C2  
07-10-05  
10-4-94-24 EF  
5-15-95-27 RM  
12-7-99-C/E RM

1"=600'

48 714 2 322 75  
29317/533

22 09

22 07

22 06

22 05

22 04

22 03

22 02

22 01

22 00

22 99

22 98

22 97

22 96

22 95

22 94

22 93

22 92

22 91

22 90

22 89

22 88

22 87

22 86

22 85

22 84

22 83

22 82

22 81

22 80

22 79

22 78

22 77

22 76

22 75

22 74

22 73

22 72

22 71

22 70

22 69

22 68

22 67

22 66

22 65

22 64

22 63

22 62

22 61

22 60

22 59

22 58

22 57

22 56

22 55

22 54

22 53

22 52

22 51

22 50

22 49

22 48

22 47

22 46

22 45

22 44

22 43

22 42

22 41

22 40

22 39

22 38

22 37

22 36

22 35

22 34

22 33

22 32

22 31

22 30

22 29

22 28

22 27

22 26

22 25

22 24

22 23

22 22

22 21

22 20

22 19

22 18

22 17

22 16

22 15

22 14

22 13

22 12

22 11

22 10

22 09

22 08

22 07

22 06

22 05

22 04

22 03

22 02

22 01

22 00

22 99

22 98

22 97

22 96

22 95

22 94

22 93

22 92

22 91

22 90

22 89

22 88

22 87

22 86

22 85

22 84

22 83

22 82

22 81

22 80

22 79

22 78

22 77

22 76

22 75

22 74

22 73

22 72

22 71

22 70

22 69

22 68

22 67

22 66

22 65

22 64

22 63

22 62

22 61

22 60

22 59

22 58

22 57

22 56

22 55

22 54

22 53

22 52

22 51

22 50

22 49

22 48

22 47

22 46

22 45

22 44

22 43

22 42

22 41

22 40

22 39

22 38

22 37

22 36

22 35

22 34

22 33

22 32

22 31

22 30

22 29

22 28

22 27

22 26

22 25

22 24

22 23

22 22

22 21

22 20

22 19

22 18

22 17

22 16

22 15

22 14

22 13

22 12

22 11

22 10

22 09

22 08

22 07

22 06

22 05

22 04

22 03

22 02

22 01

22 00

22 99

22 98

22 97

22 96

22 95

22 94

22 93

22 92

22 91

22 90

22 89

22 88

22 87

22 86

22 85

22 84

22 83

22 82

22 81

22 80

22 79

22 78

22 77

22 76

22 75

22 74

22 73

22 72

22 71

22 70

22 69

22 68

22 67

22 66

22 65

22 64

22 63

22 62

22 61

22 60

22 59

22 58

22 57

22 56

22 55

22 54

22 53

22 52

22 51

22 50

22 49

22 48

22 47

22 46

22 45

22 44

22 43

22 42

22 41

22 40

22 39

22 38

22 37

22 36

22 35

22 34

22 33

22 32

22 31

22 30

22 29

22 28

22 27

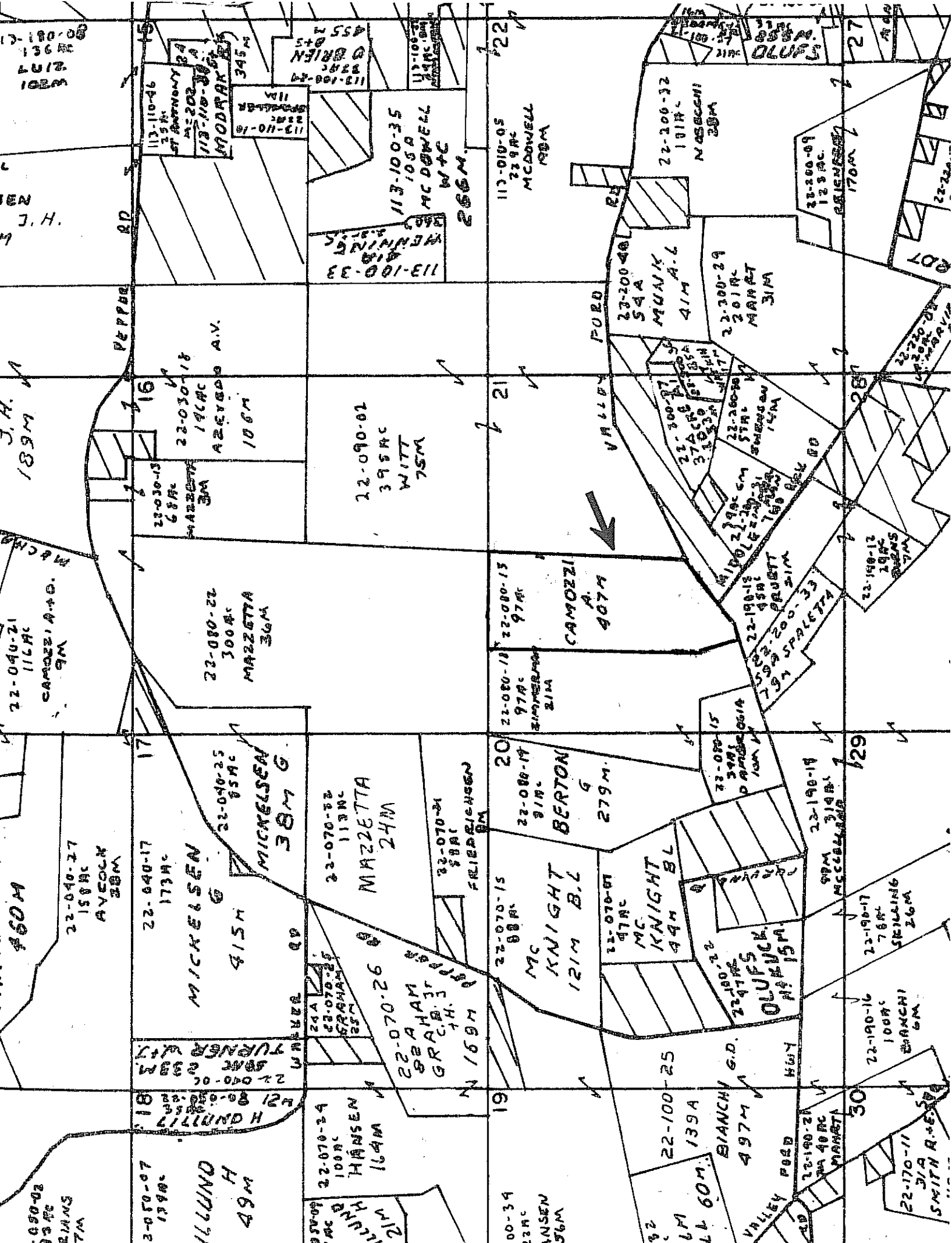
22 26

22 25

22 24

22 23

22 22



13-180-08  
1961  
1612  
1020

J.H.M.  
189M

22-040-21  
116AC  
CAMOZZI A.D.  
9M

22-040-27  
150AC  
AYCOCK  
38M

22-050-02  
132AC  
BIANS  
7M

113-110-46  
125AC  
ST. BERNARDY  
24  
113-110-38  
113-110-38  
MODRARI  
345M

22-030-13  
68AC  
MAZZETTA  
3M

22-030-18  
191AC  
AZEVEDO A.V.  
106M

22-080-22  
300AC  
MAZZETTA  
36M

22-040-25  
85AC  
MICKELSEN  
38M G

22-040-17  
173AC  
MICKELSEN  
415M

22-070-22  
113AC  
MAZZETTA  
24M

22-070-26  
25A  
22-070-26  
25M  
GRAHAM  
25M

22-070-24  
100AC  
HANSEN  
164M

22-070-29  
100AC  
HANSEN  
164M

22-070-24  
100AC  
HANSEN  
164M

22-070-24  
100AC  
HANSEN  
164M

113-100-24  
22AC  
ORLEN  
455M

113-100-35  
105A  
MC DOWELL  
W+G  
266M

113-100-33  
113-100-33  
WENNING  
5.97M

22-090-02  
395AC  
WITT  
75M

22-080-18  
97AC  
ZIMMERMAN  
31M

22-080-17  
91AC  
BERTON  
9M

22-070-15  
88AC  
MC KNIGHT  
121M B.L

22-070-15  
88AC  
MC KNIGHT  
121M B.L

22-070-15  
88AC  
MC KNIGHT  
121M B.L

22-070-15  
88AC  
MC KNIGHT  
121M B.L

22-070-15  
88AC  
MC KNIGHT  
121M B.L

22-070-15  
88AC  
MC KNIGHT  
121M B.L

22-070-15  
88AC  
MC KNIGHT  
121M B.L

22-070-15  
88AC  
MC KNIGHT  
121M B.L

22-070-15  
88AC  
MC KNIGHT  
121M B.L

22-070-15  
88AC  
MC KNIGHT  
121M B.L

22-070-15  
88AC  
MC KNIGHT  
121M B.L

113-100-05  
239AC  
MCDOWELL  
198M

22-200-48  
54A  
MUNK  
41M A-L

22-200-29  
201AC  
MAMRT  
31M

22-200-13  
97AC  
CAMOZZI  
407M

22-190-12  
289AC  
SPALETTA  
75M

22-190-12  
289AC  
SPALETTA  
75M

22-190-12  
289AC  
SPALETTA  
75M

22-190-12  
289AC  
SPALETTA  
75M

22-190-12  
289AC  
SPALETTA  
75M

22-190-12  
289AC  
SPALETTA  
75M

22-190-12  
289AC  
SPALETTA  
75M

22-190-12  
289AC  
SPALETTA  
75M

22-190-12  
289AC  
SPALETTA  
75M

22-190-12  
289AC  
SPALETTA  
75M

22-190-12  
289AC  
SPALETTA  
75M

22-190-12  
289AC  
SPALETTA  
75M

22-190-12  
289AC  
SPALETTA  
75M

22-200-32  
181AC  
NASCCHI  
28M

22-200-09  
123AC  
REINER  
170M

22-200-09  
123AC  
REINER  
170M

22-200-09  
123AC  
REINER  
170M

22-200-09  
123AC  
REINER  
170M

22-200-09  
123AC  
REINER  
170M

22-200-09  
123AC  
REINER  
170M

22-200-09  
123AC  
REINER  
170M

22-200-09  
123AC  
REINER  
170M

22-200-09  
123AC  
REINER  
170M

22-200-09  
123AC  
REINER  
170M

22-200-09  
123AC  
REINER  
170M

22-200-09  
123AC  
REINER  
170M

22-200-09  
123AC  
REINER  
170M

22-200-09  
123AC  
REINER  
170M

22-200-09  
123AC  
REINER  
170M

22-200-09  
123AC  
REINER  
170M

22-100-02  
139A  
BIANCHI G.D.  
497M

22-100-02  
139A  
BIANCHI G.D.  
497M

22-100-02  
139A  
BIANCHI G.D.  
497M

22-100-02  
139A  
BIANCHI G.D.  
497M

22-100-02  
139A  
BIANCHI G.D.  
497M

22-100-02  
139A  
BIANCHI G.D.  
497M

22-100-02  
139A  
BIANCHI G.D.  
497M

22-100-02  
139A  
BIANCHI G.D.  
497M

22-100-02  
139A  
BIANCHI G.D.  
497M

22-100-02  
139A  
BIANCHI G.D.  
497M

22-100-02  
139A  
BIANCHI G.D.  
497M

22-100-02  
139A  
BIANCHI G.D.  
497M

22-100-02  
139A  
BIANCHI G.D.  
497M

22-100-02  
139A  
BIANCHI G.D.  
497M

22-100-02  
139A  
BIANCHI G.D.  
497M

22-100-02  
139A  
BIANCHI G.D.  
497M

22-100-02  
139A  
BIANCHI G.D.  
497M

22-170-11  
31A  
SMITH R.E.  
26M

22-170-11  
31A  
SMITH R.E.  
26M

22-170-11  
31A  
SMITH R.E.  
26M

22-170-11  
31A  
SMITH R.E.  
26M

22-170-11  
31A  
SMITH R.E.  
26M

22-170-11  
31A  
SMITH R.E.  
26M

22-170-11  
31A  
SMITH R.E.  
26M

22-170-11  
31A  
SMITH R.E.  
26M

22-170-11  
31A  
SMITH R.E.  
26M

22-170-11  
31A  
SMITH R.E.  
26M

22-170-11  
31A  
SMITH R.E.  
26M

22-170-11  
31A  
SMITH R.E.  
26M

22-170-11  
31A  
SMITH R.E.  
26M

22-170-11  
31A  
SMITH R.E.  
26M

22-170-11  
31A  
SMITH R.E.  
26M

22-170-11  
31A  
SMITH R.E.  
26M

22-170-11  
31A  
SMITH R.E.  
26M

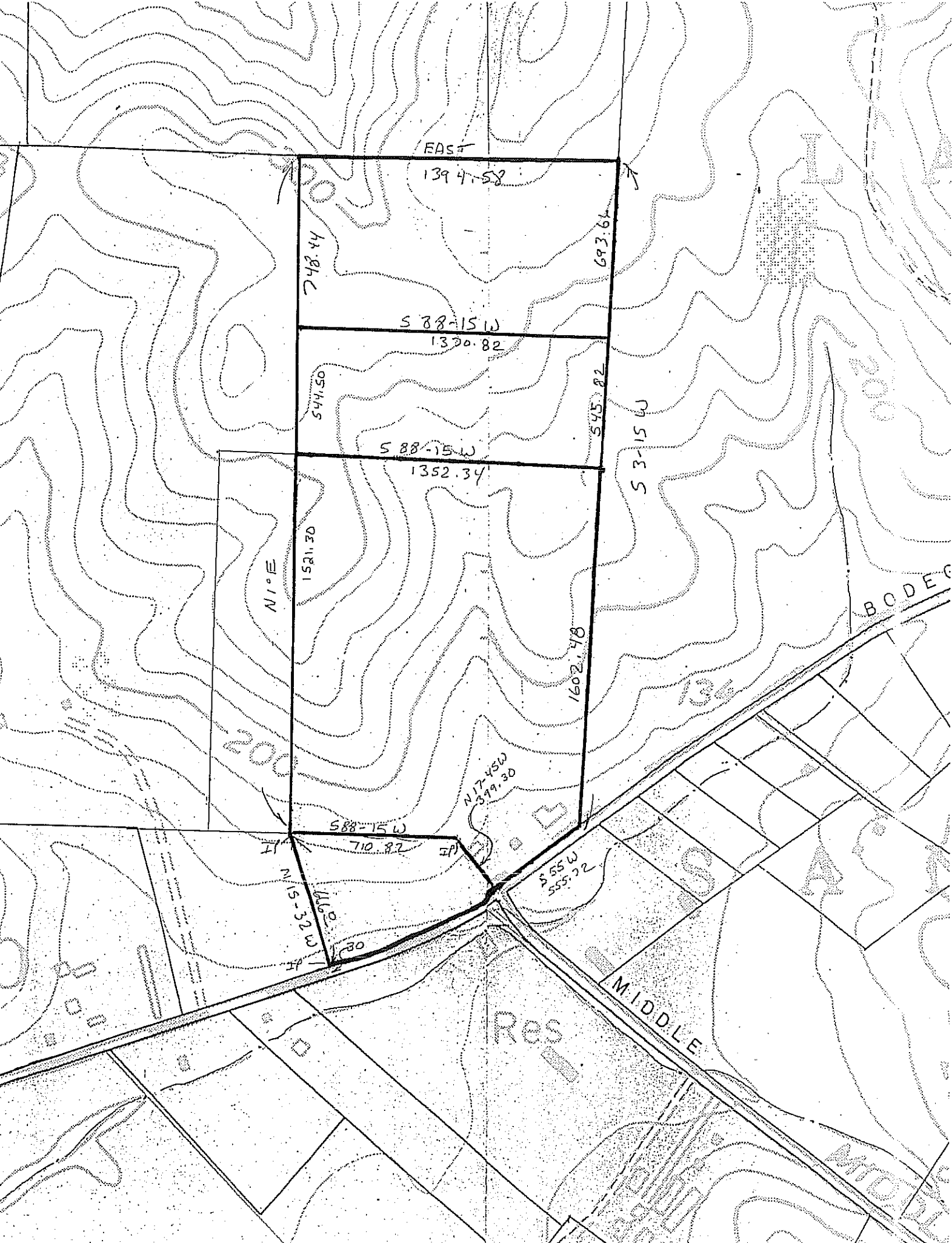


0 1.5Km

0 1.25Mi

Image courtesy of the U.S. Geological Survey

© 2004 Microsoft Corporation. **Terms of Use** **Privacy Statement**



EAST  
1394.58

748.44

693.64

S 88-15 W  
1320.82

544.50

545.82

S 88-15 W  
1352.34

S 3-15 W

N 1° E

1521.30

1602.48

N 17-45 W  
379.30

S 88-15 W  
710.82

N 15-32 W  
1170.30

S 55 W  
555.22

BODEC

MIDDLE

RES

MIDDLE

USGS 10 km SW of Rohnert Park, California, United States 01 Jul 1980

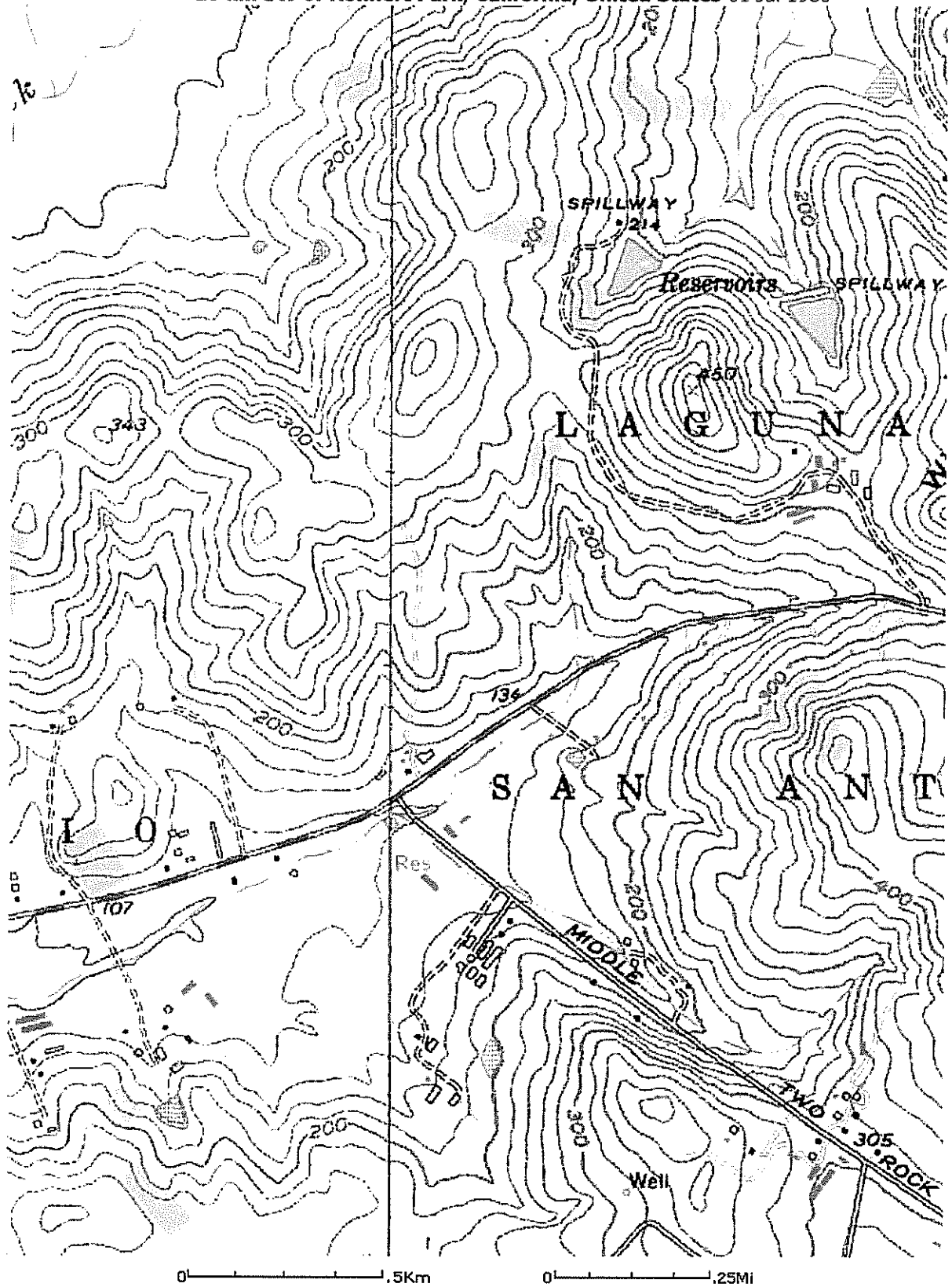


Image courtesy of the U.S. Geological Survey

© 2004 Microsoft Corporation. [Terms of Use](#) [Privacy Statement](#)